

## SMART Education offers the following services for children aged 6 to 18 years:

- Online learning programs nationwide
- Private tutorials in English and Maths
- Educational assessments and consultations
- Dyslexia screening
- Specialist programmes for dyslexia, dyspraxia ADD/ADHD
- Writing programmes
- Study skill workshops for secondary school students
- Homework advice and help
- Educational advice for parents
- CAO applications and course/career advice

Our classes in Moycullen run from 3pm to 8pm Monday to Friday. Assessments and consultations are by appointment on Saturdays and during school holidays.

# SMART Education

Learning Centre Galway

Unit 7, 1st floor  
Gáirdín Mháire  
Moycullen  
Co Galway  
**T: 091 555230**  
**M: 087 9295635**  
[info@smarteducation.ie](mailto:info@smarteducation.ie)



**Directions:** From Galway take the Clifden road to Moycullen village and go straight at the lights. On the main street on the right hand side you will see Gairdin Mhaire, the car park is after the building on the right. We are situated on the 1st floor beside Moycullen Dental Care.

## Testimonials

'The Fast ForWord® program has made a big difference...her language scores jumped...amazing'.

**Mum from Galway**

"For the first time in his life he passed English. It's wonderful and he is doing so well".

**Mother of a 12 year old in Dublin.**

"Your school is changing my child's life".

**Mother of an 11 year girl in Dublin**

"We just got our child's Drumchondra test results back... He is now on the 63rd percentile... 3 years ago he was on the 14th percentile... Thanks for all your help".

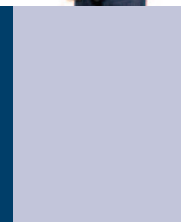
**Mother of a child who worked online**

"We just came back from the speech therapist, she can't believe the difference and she wanted to know more about the Fast ForWord program".

**Mother of a 7 year old boy in Co. Meath**

# SMART Education

Learning Centre Galway



**Does homework end in tears?**

**Study skills help for teenagers?**

**Are you concerned about your child's reading?**

**Is my child ready for school?**

**Has your child dyslexia?**

[www.smarteducation.ie](http://www.smarteducation.ie)

[www.smarteducation.ie](http://www.smarteducation.ie)



## Assessments

Children with learning difficulties who are identified early can have appropriate interventions which can change their future. If you are unsure of what type of assessment your child needs SMART Education offers a variety of assessments with follow up advice to parents starting at €60.

### What Types of assessments are available?

**Standard assessments** – takes approximately 1 hour, including reading test.

**Dyslexia screening** – takes approximately 40 minutes.

**STEER assessments** – are suitable for all children in National school and cover 10 key areas of development. This test may take 2 sessions to complete.

### What is the benefit of a SMART Assessment?

Waiting for an assessment through the school system may take up to 2 years so many parents decide to opt for private assessments. The benefit of a SMART assessment is that we look at all the areas of a child's development and learning. We can provide a full report and referral letters and discuss with parents the various options available for them to help their child.

### When is the right time to have my child assessed?

The earlier children with learning difficulties get appropriate interventions the quicker you will see results and the easier it is for the child.



**Assessments are available on Saturdays, during school holidays and midterm. If necessary we refer children onto appropriate services e.g. speech and language therapy, occupational therapy.**

## On Line Programs at Home

Using modern computer programs such as Fast Forward® we are able to offer help to students to improve their literacy in the convenience of their own home.

### How does it work?

We can install the program on a laptop or on a home computer and the student logs on 5 times a week to do their exercises. There is no set time so the student can log on at anytime and still participate in their other activities.

### How is it monitored?

While using the program online at home the student's work is being constantly monitored and parents receive a weekly email report. Every day a student's progress is monitored as each click of the mouse provides details of the child's responses to the exercises.

### How long will it take for my child to catch up?

The program is intensive and results are seen quickly, showing gains of 2 years in reading ages after 4 months on the program. Fast ForWord® is a very motivating, interactive game like program where students get points and work through various levels, helping them learn and achieve.



## Classes & Tutorials

We make learning interesting and rewarding because we create an individualised education plan ( IEP ) for your child based on their needs and ability. Our courses work because they are:

**Specific**, a learning programme is designed for your child

**Measurable**, to show your child's progress – frequent written progress reports are given

**Achievable**, because we motivate students to learn

**Relevant** to the student's age, ability and needs

**Timed** so each student has a set class each week and we can review progress after 6 weeks.

### I get grinds for my child, will that do?

Grinds cover the work that the child does in school; they will not help the fundamental issues as to why the child has problems learning, ie. the core issues of memory, attention, processing and sequencing need to be addressed first.

It is also important to make children independent learners and feel they can succeed. We plan individual programs and constantly monitor progress. Per class our system is cheaper than grinds and because we plan individual programs and constantly monitor progress you can see the value for money.



**SMART Education**  
Learning Centre Galway